

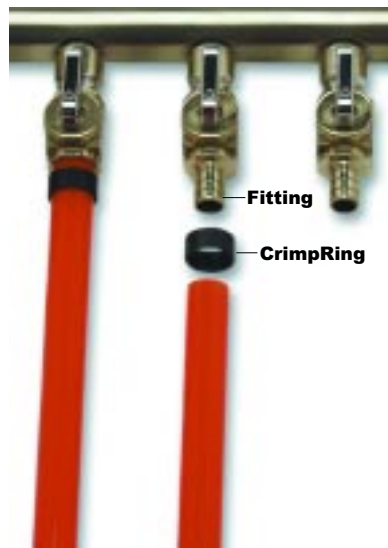
Cross-Linked
Polyethylene Tubing
with Oxygen Barrier

Radiant PEX

FOR
**Hydronic
Radiant Heating
& Snowmelting
Systems**

TWO Radiant PEX FITTING SYSTEMS

Watts Radiant offers two fitting systems for radiant applications: CrimpRing™ and T-20 Compression™.

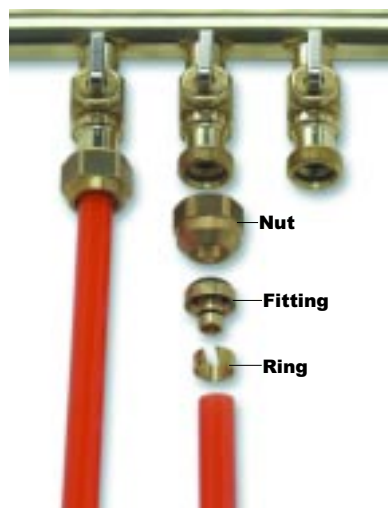


CrimpRing Fittings

The system features a ribbed, solid brass fitting with a copper CrimpRing. After crimping, these connections form a fast and permanent seal — a system proven over the last 25 years. CrimpRing fittings come in 3/8", 1/2", 3/4", 5/8", and 1". That's right, 5/8" is now available!

THE DRY FIT ADVANTAGE

When you're running thousands of feet of pipe every day, being able to dry fit connections saves time and labor. It's fast and easy to adjust pipe lengths, take out slack, and make a job look great without taking a lot of time. "Rough-in" the entire system, check it out for fit and appearance, then crimp each connection for permanence.



T-20 Compression Fittings

T-20 Compression fittings are a proven, all-brass system that seals without special tools. Each T-20 Compression fitting comes with two O-rings, creating a tight seal. Available for 3/8", 1/2", 5/8", and 3/4" Radiant PEX. Used for decades.

PRESSURE TEST IMMEDIATELY

With Radiant PEX fittings, you can make a permanent connection fast, and do a pressure test before you leave the job that night. Save a trip back to the project the next morning!

CODES, LISTINGS, AND STANDARDS

Radiant PEX is manufactured in accordance with American Standard Testing Methods F-876 and F-877, is Certified by NSF to Standards 14 and 61, and is listed by the International Code Council Evaluation Service (ICC-ES) Report #ESR-1155 and the International Association of Plumbing and Mechanical Officials (IAPMO) carrying the Uniform Plumbing Code symbol. All Radiant PEX pipe is approved to CSA Standard B137.5.



New crimp tool with interchangeable crimping jaws for 3/8", 1/2", 5/8", and 3/4" CrimpRings.

Radiant PEX MANIFOLDS



Watts Europe's finest stainless steel manifolds.



Watts Europe's finest cast brass manifolds.



Tubular copper and brass manifolds from 1" to 6" diameter.



A subsidiary of Watts Water Technologies, Inc. NYSE: WTS

In the United States

Watts Radiant, Inc.
4500 Progress Place
Springfield, MO 65803
1-800-276-2419 toll-free
417-864-6108 phone
417-864-8161 fax
www.wattsradiant.com

In Canada

Watts Industries-Canada
5435 North Service Road
Burlington, ON L7L 5H7
1-888-208-8927 toll-free phone
905-332-4090 phone
1-888-882-1979 toll-free fax
905-332-7068 fax
www.wattscanada.ca



RadiantPEX™

Cross-Linked Polyethylene Tubing with EVOH Barrier

For Hydronic Radiant Heating and Snowmelting Systems

THE RadiantPEX ADVANTAGE

Cross-linked RadiantPEX is tough, flexible, long-lasting, and maintenance-free. RadiantPEX is easy to transport, won't corrode, and withstands continuous temperatures to 180°F. RadiantPEX is a three-layer pipe with an EVOH oxygen barrier protecting ferrous system components against oxidation.

RadiantPEX IS BETTER

RadiantPEX is manufactured to American Standard Testing Methods for cross-linked polyethylene tubing (ASTM F-876 and F-877). Included are requirements and test methods for materials, workmanship, dimensions, environmental stress cracking, sustained hydrostatic pressure strength, thermo-cycling resistance, bend strength, and degree of cross-linking, among other tests. RadiantPEX meets or exceeds these specifications.

RadiantPEX is manufactured using the Silane process, the most common process worldwide for making cross-linked polyethylene tubing. These Silane bonds form a tough, durable pipe that is very resistant to high temperatures and oxidation.



RadiantPEX in a residential SubRay™-heated floor.



RadiantPEX in a residential slab heating system.



RadiantPEX used in an industrial slab heating system.



RadiantPEX in a commercial snowmelting system.

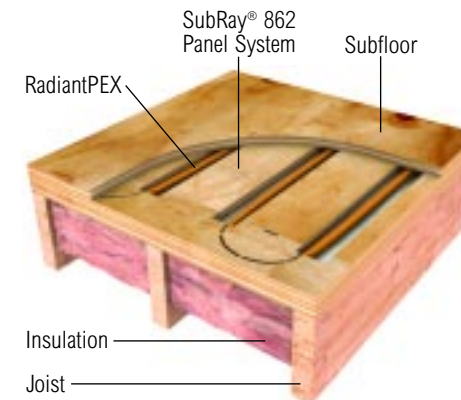
IT'S GUARANTEED

All RadiantPEX carries a 25-year warranty for residential and commercial heating and snowmelting applications.

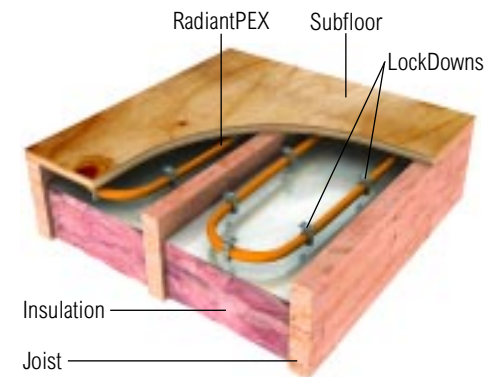
RadiantPEX IS THE RIGHT CHOICE

RadiantPEX is the right choice for a variety of floor-heating, snowmelting, and supply line applications:

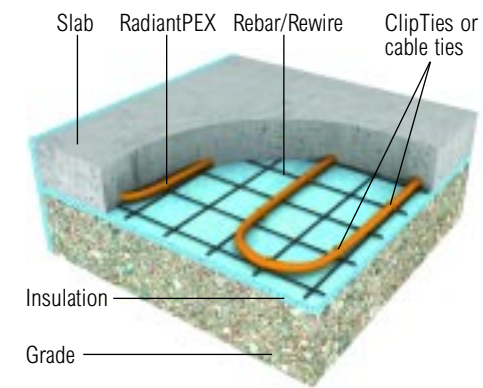
- Use RadiantPEX for slabs, thin slabs, and framed floor systems.
- Use RadiantPEX to supply radiant manifolds, baseboard heaters, or fan coils.



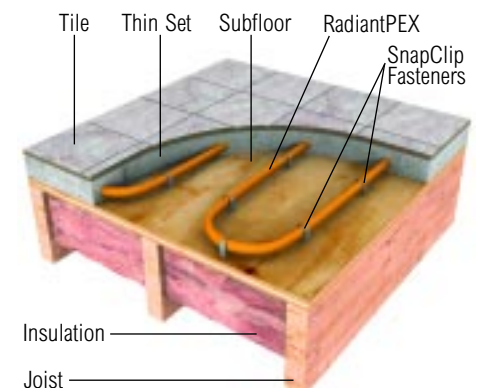
Install RadiantPEX in "dry-panel systems" using Watts Radiant's SubRay® 862 system. It works great for walls and ceilings, too.



Install RadiantPEX for underfloor radiant systems using Watts Radiant's LockDown™ fasteners or heat transfer plates.



Install RadiantPEX in slab systems for radiant floor heating or snowmelting applications using ClipTies™ or cable ties.



Install RadiantPEX in thin-slab systems using Watts Radiant's SnapClips™, RailWays™, or staples.

RadiantPEX SPECIFICATIONS

	NOMINAL I.D.	O.D.	BEND RADIUS	STANDARD COIL LENGTHS	FLUID CAPACITY PER 100'
3/8" RadiantPEX	3/8"	1/2"	4"	600'	0.50 Gal.
1/2" RadiantPEX	1/2"	5/8"	5"	100'/600'/1000'	0.92 Gal.
5/8" RadiantPEX	5/8"	3/4"	6"	600'/1200'	1.4 Gal.
3/4" RadiantPEX	3/4"	7/8"	7"	600'/1200'	1.8 Gal.
1" RadiantPEX	1"	1-1/8"	10"	600'	3.0 Gal.

RadiantPEX is a cross-linked polyethylene tubing manufactured with an EVOH oxygen barrier. All sizes meet ASTM F-876 standards and are manufactured to SDR 9 dimensions. It is shipped in 100' to 1200' length boxed coils in 3/8", 1/2", 5/8", 3/4", and 1" sizes.